



2017

Price Chair in Teaching, Learning, and Advising Symposium

Enhancing the Learning Experience



August 15, 2017, 9:30 a.m. - 3:15 p.m.

Fawcett Center

Columbus Campus

The Ohio State University



**THE OHIO STATE
UNIVERSITY**

COLLEGE OF FOOD, AGRICULTURAL,
AND ENVIRONMENTAL SCIENCES

Symposium Agenda

8:00 a.m.	Pre-symposium meetings			
	<i>Hancock</i> Columbus units advising session (SENR session will be separate from Symposium)		<i>Franklin/Hamilton</i> Graduate education session	
9:30 a.m.	Breakfast and Registration			
	<i>Conference Theater Lobby</i>			
10:00 a.m.	Symposium Welcome			
	<i>Conference Theater</i> Dr. Cathann Kress, Vice President of Agricultural Administration and Dean Dr. Bruce McPherson, Executive Vice President and Provost			
10:15 a.m.	Keynote Speaker			
	<i>Conference Theater</i> Dr. Marlene Strathe, Professor and Director of the School of Education, Iowa State University			
11:15 a.m.	Morning Breakout Sessions			
	<i>Conference Theater</i> Assessment 101: Demystify concepts and best practices.	<i>Franklin/Hamilton</i> Advising through the eyes of the first-year student.	<i>Hancock</i> The Assessment Cycle: Know where you are and what to do next.	<i>Clinton</i> We build it - They came - What exactly did they do? A look at what research is uncovering from student use of a collaborative learning object repository.
12:00 p.m.	Lunch			
	<i>Grand Ballroom</i> Meal (Buffet, surprise guest, eTools Gallery open) Program: - Dr. Linda Martin, Associate Dean and Director, CFAES Academic Programs: CFAES Academic Programs Update - Dr. Randy Smith, Vice Provost for Academic Programs: Update on university policies, The University Institute for Teaching and Learning, etc. - Dr. Catherine P. Montalto, Associate Professor, College of Education and Human Ecology, Department of Human Sciences: Update on the review of the General Education requirements at Ohio State. Announcement of the 2017 CFAES Learning Outcomes Assessment Award of Distinction recipients			<i>The Club</i> Online Learning Tools Gallery
1:30 p.m.	Early Afternoon Breakout Sessions			
	<i>Clinton</i> An exportable model for ongoing program assessment and improvement.	<i>Conference Theater</i> Teaching with Technology: 3 techniques to liven up your lessons.	<i>Franklin/Hamilton</i> Leadership incubators: Advising undergraduate student organizations.	<i>Hancock</i> Bringing the pits to online learning: At home labs in soil science & other dirty tales. *
2:15 p.m.	Break (snacks and beverages available)			
	<i>Top of the Stairs Lobby</i>			
2:30 p.m.	Mid-Afternoon Breakout Sessions			
	<i>Conference Theater</i> eLearning in the College of Nursing: Online program design, implementation, and marketing.	<i>Clinton</i> Student Centered Advising: What does "Student Development Theory" tell us?	<i>Franklin/Hamilton</i> Why we assess: Assessment results make a difference.	<i>Hancock</i> * Continuation of Early- Afternoon Session: Bringing the pits to online learning.
3:15 p.m.	Symposium Adjourned			
	<i>Main Entrance</i> Wooster transportation will depart promptly at 3:30 p.m.			
4:00-5:00 p.m.	SENR Post-Symposium Meeting			
	<i>Hancock</i> Dr. Ron Reuter, Associate Professor, Oregon State University, Cascades Natural Resources			

All;

On behalf of the College of Food, Agricultural, and Environmental Sciences (CFAES) and as the Price-Barbee Chair in Teaching, Learning and Advising, I would like to welcome you to the 2017 Price Chair Symposium - Enhancing the Learning Experience. Price Chair funds have allowed CFAES to further enhance teaching, promote engaged learning and foster quality advising and mentoring in the College. There is little doubt; these efforts have had a deep, meaningful and lasting impact on our students and faculty.



Special thanks to our Symposium Action Planning Committee for organizing this Symposium. These individuals share my passion for teaching, learning and advising excellence and have been instrumental in bringing the Symposium to fruition. We hope you use this opportunity to engage with friends and colleagues in an effort to further enhance student success, university wide.

Best,
Linda

Linda C. Martin
Associate Dean & Director, Academic Programs
Price Chair in Teaching, Learning and Advising
College of Food, Agricultural, and Environmental Sciences



Dear Colleagues:

It has been a true pleasure working with the members of the action planning committee which consisted of three work teams (advising, assessment, eLearning), during the last 18 months to plan and design this event, supported by the Price Chair in Teaching, Learning, and Advising endowment. We wish to thank these dedicated individuals from across our college who have put time and effort into developing this unique professional development opportunity for the members of the CFAES teaching and learning community. We hope as a participant you enjoy today's program, the devoted time to interact with colleagues, and gain some insights on advising, assessment, and eLearning to strengthen student success.

Cordially,
Symposium Action Planning Committee Co-Chairs
- R. Warren Flood and Sarah D. Williams

Advising	Assessment	eLearning
Steve Neal (<i>lead</i>)	Warren Flood (<i>lead</i>)	Deanna Namuth-Covert (<i>lead</i>)
Adem Cakmak	Greg Hitzhusen	Valerie Childress
Pasha Lyvers Pepper	David Hix	Wendy Klooster
Joe Raczkowski	Ross MacDonald	Amy Kohmetscher
Susie Whittington	Tom Mitchell	Jeanne Osborne
		Sarah Williams

*Thank You
for all that you've done!*

8:00 a.m.

Pre-symposium meetings

CFAES Undergraduate Advising Meeting

Leader: Dr. Steve Neal, Assistant Dean, CFAES Academic Affairs

Resources and updates will be provided to assist Columbus campus College academic advisors and support staff in preparing for the new academic year. College Academic Programs staff will provide important information. Advising folders for new students will be distributed.

CFAES Graduate Education Meeting

Leader: Dr. P. Charles Goebel, Interim Associate Dean for Research and Graduate Education

Eric Bode, CFAES Senior Fiscal Officer, will show attendees the new funding model being proposed for graduate associateships. The group will also hear from Scott Herness on the final report from the campus conversations on graduate education. Warren Flood will explain the process for assessment of graduate programs. Charles Goebel will lead brainstorming groups to gather information on the unit's viewpoint of what the College should be supporting in graduate education.

10:15 a.m.

Keynote

Advising, Assessment and eLearning: Strengthening Student Success



Speaker:

Dr. Marlene I. Strathe is the Director of and Professor in the School of Education, Iowa State University. As an Iowa State alumna who has led three other universities as vice president for academic affairs and provost, Dr. Strathe returned to Ames to lead the School of Education in January 2015. She earned four degrees from Iowa State, including bachelor's degrees in both government and bacteriology, a master's degree in psychology/counseling and higher education, and a doctorate in education with an emphasis in research and evaluation. She also holds an education specialist degree in educational psychology/evaluation from Northern Iowa. Strathe's research interests include academic administration, special vocational needs education, and teacher education and preparation. View her "human scientist" YouTube clip at: <https://www.youtube.com/watch?v=DBAap9xir0w>

11:15 a.m.

Morning Breakout Sessions

Assessment 101: Demystify concepts and best practices

What do we mean by program learning outcomes assessment, and what is its value to our teaching and to our students? How does the assessment process work? What is the language of assessment, and which methods are encouraged at OSU as best practices? What are some reliable ways that the assessment process can be used to enhance the learning experiences of our students? This session will highlight these basic principles as a guide for using assessment as a tool for success in teaching and learning.



Presenter:

Dr. Kathryn Plank (kplank@otterbein.edu) is the Director of the Center for Teaching and Learning and Associate Professor of Education at Otterbein University. Her research interests include program assessment, teaching consultation, diversity, educational technology, critical thinking, and team teaching.

Advising through the eyes of the first-year student

New first year students experience many challenges as they adjust to the collegiate environment. Academic advisors are in a unique position to assist students with this transition. Participants will gain a better understanding of student development and their needs during the first year of college life, and will be better equipped to help students successfully navigate the first year.



Presenters:

Ms. Nicole Craven (craven.10@osu.edu) is an Associate Director for University Orientation and First Year Experience at The Ohio State University. Nicole works closely with the university's First Year Success Series, University Orientation and oversees communication and outreach strategies for the office.



Ms. Jenny Osborn (Osborn.21@osu.edu) is an Associate Director for University Orientation and First Year Experience at The Ohio State University. Jenny works closely with University Orientation and supports retention efforts through collaboration with colleagues in academic units and other campus stakeholders.

The Assessment Cycle: Know where you are and what to do next

This session will help programs determine where in the Assessment Cycle they are currently operating and then discuss, with examples how to move to the next steps. Participants will be asked to identify their current position in the cycle and then develop plans on how to advance. Specific examples of how other programs matriculated through the cycle and techniques used will be presented.



Presenter:

Dr. Thomas Mitchell (mitchell.815@osu.edu) is a Professor in the Department of Plant Pathology at The Ohio State University where his research focuses on fungal biology and molecular genetics. He is an active undergraduate advisor and current faculty fellow in the Graduate School where he focuses on helping units develop their program's assessment plans.

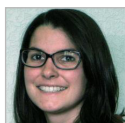
We build it - They came - What exactly did they do? A look at what research is uncovering from student use of collaborative learning object repository

A learning object repository is a collection of stand-alone learning materials, such as video clip, animation, or eLesson, that can be shared by authors/instructors and repackaged for multiple learning audiences. We'll look at the Plant and Soil Sciences eLibrary repository, a collaboration of 17 universities and industry partners that attracts 600,000+ global visitors yearly from students, teachers, extension, the public, science professionals, etc. We'll look at research from this 18-year project which is uncovering insights into how materials are being used. Insights and surprises uncovered so far from data collected from this federally funded databased repository will be shared including knowledge gain measurements in face-to-face and online environments, as well as learning style approaches students employ.



Presenters:

Dr. Deana Namuth-Covert (namuth-covert.1@osu.edu) is a Professor at Ohio State ATI where she remotely teaches Intro Agronomy courses. She is also Director of CFAES Online Education and Outreach where she is providing overall leadership to our college's online endeavors.



Ms. Amy Kohmetscher (kohmetscher.1@osu.edu) is an Instructional Development Specialist at Ohio State ATI. Her role includes working with faculty to develop and deliver distance courses, creating online content for courses and grant projects, and teaching as needed. Additionally, Amy collaborates with staff and faculty from other departments and extension to help facilitate delivery of online non-academic credit courses and programs.

An exportable model for ongoing program assessment and improvement

Integration of program assessment into other program improvement efforts can be done efficiently and beneficially. This session overviews a model process by which a significant portion of assessment for a graduate program can be integrated into advisor's individual student progress reports, formal confidential discussions with exiting students, and the development and use of an alumni advisory committee. By the end of this session, participants will understand the underlying construct of the model currently in use in OSU's Department of Entomology and will be given access to templates by which to adapt and implement the model, including instructions, process descriptions, questionnaires, sample emails, surveys, and report templates.

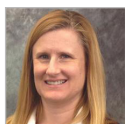


Presenter:

Dr. Ross MacDonald (macdonald.118@osu.edu) is an Academic Program Specialist in the Department of Entomology at The Ohio State University where he focuses on curriculum development, multicultural education, and the applications of communication and learning theory.

Teaching with Technology: 3 techniques to liven up your lessons

Technology can never replace good teaching but it can help to enhance the experience. Students of today have grown up using a variety of technology tools in and out of the classroom. When they enter higher education institutions, they expect to use these tools and more. Join members of the CFAES e-Team in learning about various technologies used in face-to-face and distance courses to create an interactive atmosphere. During this session you will be introduced to several educational technologies, be shown how they have been used in CFAES courses, and how you might be able to adopt them for your courses.

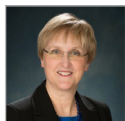


Presenter:

Ms. Valerie Childress (childress.39@osu.edu) is an Instructional Aids Associate at Ohio State ATI. Valerie's role includes working with faculty for developing and delivering blended, distance and online courses, exploring and utilizing various online educational tools and software, creating content for courses and collaborating with other departments delivering online content.

Leadership incubators: Advising undergraduate student organizations

Providing opportunities for students to develop sound leadership skills in an important element of the college experience. Developing core leadership competencies is critical for the future success of graduates. Examples of using undergraduate clubs and organizations to provide opportunities for students to discover, practice and enrich their leadership capabilities will be presented.



Presenter:

Dr. Catherine P. Montalto (montalto.2@osu.edu) is an Associate Professor in the Department of Human Sciences where her focus is on consumer sciences. She is involved in teaching, advising, and several university initiatives, one involving the review of the GE curriculum at OSU.

Bringing the pits to online learning: At home labs in soil science and other dirty tales

Science happens in kitchens all over the world every hour of the day - and hardly anybody thinks anything about it. Soil science, while complex in theory, can be explored at the beginner's level in a kitchen, in a hands-on way, with very simple tools, and provide the same amount of insight as a class at an R1 university teaching lab. We will try out some simple experiments and engage our creativity to explore new ways of learning hands-on science, without the science lab. They we will know if this can be translated to the online learner to provide an effective, affordable experiential education.



Presenter:

Dr. Ron Reuter (ron.reuter@oregonstate.edu) is an Associate Professor in the Forest Resources Department at Oregon State University Cascades. He teaches several classes and is engaged in research in the areas of effective distance education technology and ecosystem processes in Oregon's high desert.

(90 minute session - continues through "mid-afternoon breakout session")

eLearning in the College of Nursing: Online program design, implementation, and marketing

The College of Nursing has launched several successful online programs and courses and continues to add to their online academic options. Join three key members of their team to hear more about how online offerings at the College of Nursing are designed, implemented, and marketed. Find out how they approach instructional design, provide infrastructure and IT support, and market their online academic and professional development opportunities.



Presenters:

Ms. Joni Tornwall (tornwall.2@osu.edu) is the Manager of Instructional Services in the College of Nursing. She began her career as an operating room nurse and now assists faculty with instructional design and integration of technology into educational experiences. Joni has over 10 years of experience teaching online and face-to-face courses in health professions and education. She is pursuing her PhD in learning technologies.



Ms. Melissa L. Weber (weber.254@osu.edu) serves as Special Project Director, Marketing and Communications for the College of Nursing.



Mr. Awais Ali (ali.61@osu.edu) is the Director of IT and Business Systems at The Ohio State University College of Nursing. He plans, coordinates, directs, and designs all operational activities of the IT department, and he provides direction and support for IT solutions that enhance mission-critical business operations.

Student Centered Advising: What does “Student Development Theory” tell us?

Through research, we are informed of students’ changing developmental needs across the college career. Assisting students in that development is an expectation of academic advisors. Participants will gain insight into thoughtfully advising students across the span of their development.



Presenters:

Dr. Caryn Filson (filson.5@osu.edu) is an Assistant Professor of Professional Practice in the Department of Agricultural Communication, Education, and Leadership at The Ohio State University. She is also the Agriscience Education Program Coordinator.



Dr. M. Susie Whittington (whittington.1@osu.edu) is a Professor in the Department of Agricultural Communication, Education, and Leadership at The Ohio State University. Her research focuses on cognitive levels of teaching and learning, teaching methodologies, and content retention and transfer.

Why we assess: Assessment results make a difference

Once learning outcomes assessment findings are collected, of what use are they? We know assessment results are intended to inform improvements in the learning experiences of our students. However, for many programs, assessment data has not been integrated into decision making processes and revisions. In this session, presenters will share a series of useful examples from their experiences in which assessment results were communicated, informed programmatic and curricular revisions, and enhanced educational quality. Participants will be able to adapt these examples for their departments.



Presenters:

Dr. Pasha Lyvers Pepper (lyvers-pepper.1@osu.edu) is the Interim Associate Chair and Associate Professor in the Department of Animal Science at The Ohio State University. Her research areas focus on education, swine, and nutrition.



Dr. R. Warren Flood (flood.13@osu.edu) is the Director in the College of Food, Agricultural, and Environmental Sciences - Academic Programs’ Office for Teaching, Learning, and Assessment. He focuses on learning outcomes assessment for the college and serves as one of two University administrators for TracDat, Ohio State’s system for assessment documenting and reporting.

Bringing the pits to online learning: At home labs in soil science and other dirty tales

(Continuation of “Early-Afternoon Session”)

Please complete the evaluation for today’s event at:
http://go.osu.edu/CFAES_PriceChairSymposium_Evaluation

CFAES eTeam

The CFAES eTeam is an open group, meeting monthly with representation from most CFAES departments and support units. Our mission is to provide networking opportunities among the group, share ideas/problem solving, bridge communication between administration and departments, and establish CFAES as a national leader in online education (academic and professional development/outreach). eTeam representatives include faculty, instructional designers, IT experts, extension, and ODEE. A few accomplishments from the eTeam include:

- 1.) Providing eTool and eCourse design training to complement ODEE's efforts. This includes individualized training, as well as group events like the online track here at the Symposium.
- 2.) Assisting faculty in migrating to the new Canvas system.
- 3.) Addressing college-wide needs such as identifying a video captioning service, a public facing Canvas license, "Whisper Room" types of studios, and establishing underpinning pedagogical research.

If your unit currently does not have an eTeam representative or if you are interested in joining the group, please send Deana a quick email so we may include you (namuth-covert.1@osu.edu).



eTeam Affiliates

Unit	Name	Title	Contact Info
Agricultural Communication, Education, and Leadership	Emily Buck	Associate Professor	buck.210@osu.edu
	Mary Kivel	Graduate and eLearning Program Coordinator	kivel.1@osu.edu
	Tracy Kitchel	Department Chair	kitchel.2@osu.edu
Animal Sciences	Mike Chakerian	Senior Systems Manager	chakerian.1@osu.edu
Ohio State ATI	Valerie Childress	Instructional Aids Associate	childress.39@osu.edu
	Amy Kohmetscher	Instructional Development Specialist	kohmetscher.1@osu.edu
Office for Teaching, Learning, and Assessment	Warren Flood	Director	flood.13@osu.edu
	Sarah Williams	Coordinator	williams.4263@osu.edu
Director of eLearning	Deana Namuth-Covert	Professor	namuth-covert.1@osu.edu
Entomology	Wendy Klooster	Academic Program Coordinator	klooster.2@osu.edu
Extension	Jamie Seger	Program Director	seger.23@osu.edu
	Danae Wolfe	Program Specialist	wolfe.540@osu.edu
Food Science and Technology	Steven Simmons	Laboratory Supervisor	simmons.263@osu.edu
	Alvarez Valente	Food Industry Center Director	alvarez.23@osu.edu
Horticulture and Crop Science	Bruce Ackley	Program Specialist	ackley.19@osu.edu
	Meredith Luikart	Academic Program Coordinator	luikart.6@osu.edu
Office of Distance Education and eLearning - Scholarship	Jacob Bane	Senior Instructional Designer/ Instructional Development Specialist	bane.17@osu.edu
School of Environment and Natural Resources	Kylien Shaul	Instructional Aids Associate	shaul.9@osu.edu
	Tim Morton	Systems Specialist	morton.162@osu.edu

eTools Gallery

Be certain to visit the eTools Gallery from 12-1 PM in The Club where eTools experts from the College and ODEE will be available to answer your questions.

Featured eTools include:

carmen
COURSES

Carmen Canvas

VITA
Scholarly activity management

Vita



Top Hat

U.OSU

u.osu.edu



CAMERA360

Video Production

carmen
CONNECT

Adobe Connect/Carmen Connect

zoom

Zoom

iBooks

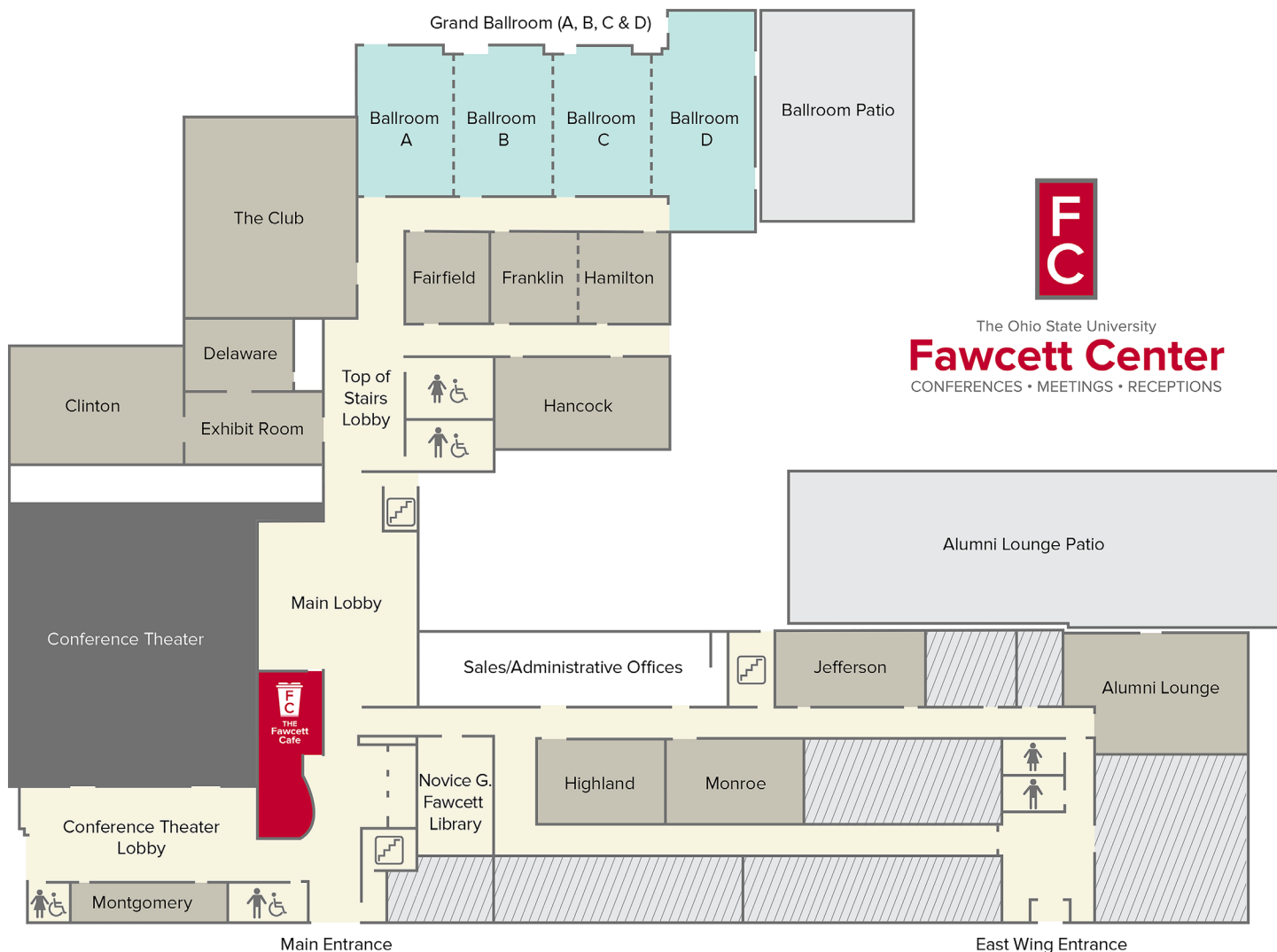
Digital Books

C R

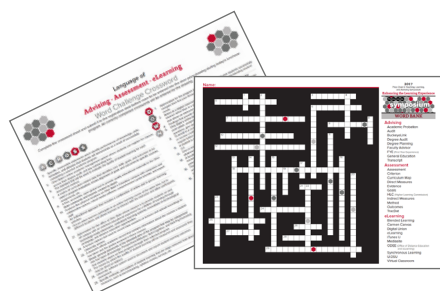
Camtasia/TechSmith Relay

mediasite
by sonicfoundry

Mediasite



The Ohio State University
Fawcett Center
 CONFERENCES • MEETINGS • RECEPTIONS



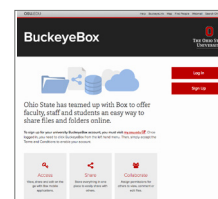
Enter to Win!

Complete the **Language of Advising - Assessment - eLearning Word Challenge Crossword** sheet, using the terms listed in the **WORD BANK** and submit it to the registration desk before noon to be entered into the door-prize drawing during today's luncheon program. All correctly completed crosswords will be entered for the drawing.

Want to access materials from the symposium later?

Handouts and program materials from symposium will be available to participants via the **BuckeyeBox** after today's event. To access go to:

http://go.osu.edu/CFAES_PriceChairSymposium_Box



Please complete the evaluation for today's event at:
http://go.osu.edu/CFAES_PriceChairSymposium_Evaluation

COLLEGE OF
 FOOD, AGRICULTURAL, AND
 ENVIRONMENTAL SCIENCES
ACADEMIC PROGRAMS

Office for Teaching, Learning, and Assessment

100 Agricultural Administration Building
 2120 Fyffe Road
 Columbus, Ohio 43210

614-292-6891
 email: CFAES_TeachLearnAssess@osu.edu
<http://go.osu.edu/CFAESTeachLearnAssess>